

MLT & MLT-X 960

INDUSTRIAL and AGRICULTURE HANDLING solutions

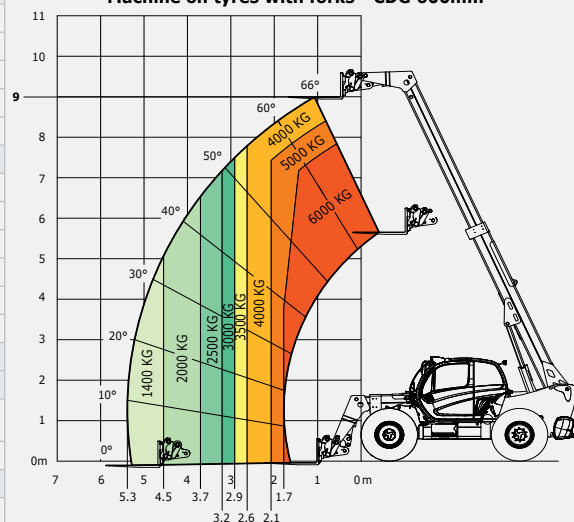


MLT & MLT-X 960

	MLT 960	MLT-X 960
Lifting		
Max. capacity	6000 kg	
Max. lifting height	9 m	
Max. outreach	5.3 m	
Reach at max. height	1.1 m	
Break-out force with bucket	7300 daN	
Unladen time		
Lifting	8.5 secs	
Lowering	6.5 secs	
Extension	7 secs	
Retraction	6 secs	
Crowd	3.8 secs	
Dump	3.6 secs	
Tyres	500/70 - R24	
Braking		
Service brake	hydraulic oil immersed multi-disc braking on front/rear axles	
Parking brake	automatic negative handbrake on the front axle	
Engine		
Type	JOHN DEERE	
Cubic capacity	4045 PWX 104 kW St.IIIB	4045 - PWX St.IIIA
Power	141 HP - 104 kW	137 HP - 102 kW
Max. torque	534 Nm - 1500 rpm	545 Nm - 1500 rpm
Injection	direct	
Cooling	water	
Laden drawbar pull	10000 daN	
Transmission		
Gearbox	CVT DANA 318	
Reversing shift	electrohydraulic control	
Max. travel speed (may vary according to applicable regulations)	40 kph	
Hydraulics		
Pump	swashplate piston pumps electronically controlled variable cubic capacity	
Control valve	180 l/min - 270 bar	
Rexroth		
Capacities		
Hydraulic oil	153 l	
Fuel	135 l	
Unladen weight (with forks)	11400 kg	
Dimensions		
1. Ground clearance	0.45 m	
2. Overall length to carriage	6.1 m	
3. Wheelbase	3 m	
4. Overall width of cab	0.995 m	
5. Overall width	2.48 m	
6. Overall height	2.53 m	
7. Turning radius (over tyres)	4.3 m	
8. Turning radius (with forks)	5.49 m	
Standard forks (length x width x thickness)	1200 x 200 x 60 mm	
Noise and vibration		
Noise at driving position (LpA)	80 dB	
Environmental noise (LwA)	105 dB	
Vibration to whole hand/arm	< 2.5 m/s ²	

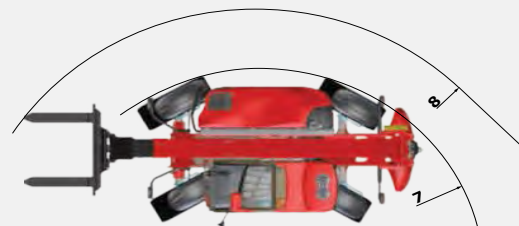
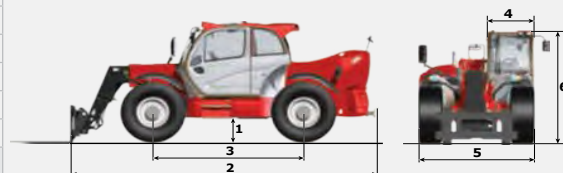
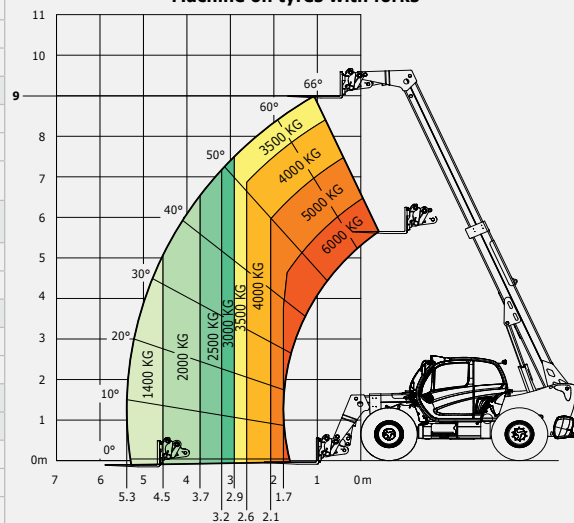
Industrial load chart
standard EN1459 A

Machine on tyres with forks - CDG 600mm



Rough terrain load chart
standard EN1459 B

Machine on tyres with forks



Your nearest **MANITOU** dealer:



9545 Concession 6N
Mount Forest, ON
N0G 2L0

519.323.4289

www.maplelanefarmservice.ca



Head office:

B.P. 249 - 430 rue de l'Aubinière - 44158 Ancenis Cedex - France
Tel: 00 33 (0)2 40 09 10 11 - Fax: 00 33 (0)2 40 09 10 97
www.manitou.com